

Zdrowas' będz' Maryja

Dolcissimo-lentabilissimo H. M. Górecki

S.A. *p*

T.B.

Zdrowas' będz' Ma-ry-ja! niebieska li-li-ja,

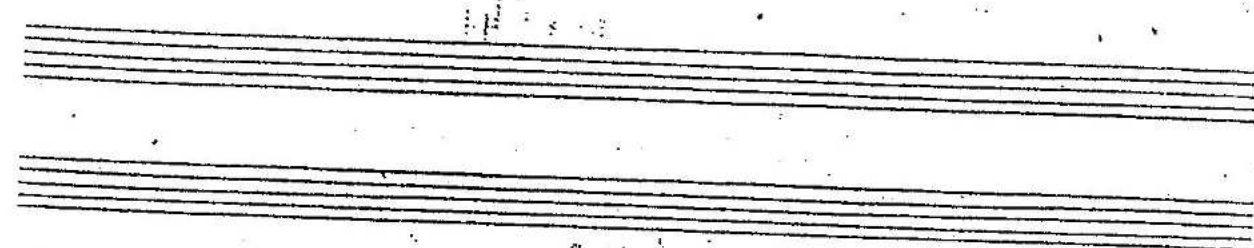
Detailed description: This system contains the first two staves of the score. The top staff is for Soprano and Alto (S.A.) and the bottom staff is for Tenor and Bass (T.B.). The music is in G major and 3/4 time. The tempo and dynamics are marked 'Dolcissimo-lentabilissimo' and 'p'. The lyrics are 'Zdrowas' będz' Ma-ry-ja! niebieska li-li-ja,'.

Panna Bęga mi-ła, Matko lęka-ła-się

Detailed description: This system contains the next two staves of the score. The lyrics are 'Panna Bęga mi-ła, Matko lęka-ła-się'.

Tęś jest nasza uciechka, Najświętsza Ma-ry-ja!

Detailed description: This system contains the final two staves of the score. The lyrics are 'Tęś jest nasza uciechka, Najświętsza Ma-ry-ja!'.



Tys jäs hässä uctoanka, Näjstänstää Ma ry- ja!

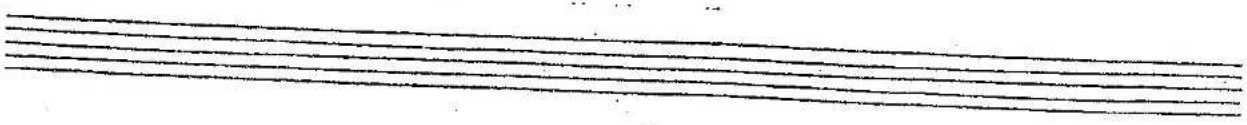
Pieno mltto katto

pp

Näjästää Ma ry- ja! Ma ry-

piu *allargando*

ja! Ma ry- ja!



Piu lento - Largo

P

traskis pēna Rān-šij, Cij sloca a-til-šij,

Parhā's had par-na-mi, Svētā nad svēty-ly-mi,

O Najsvētā Mary-jo, Modl'sis dīs sa-na-mi.

